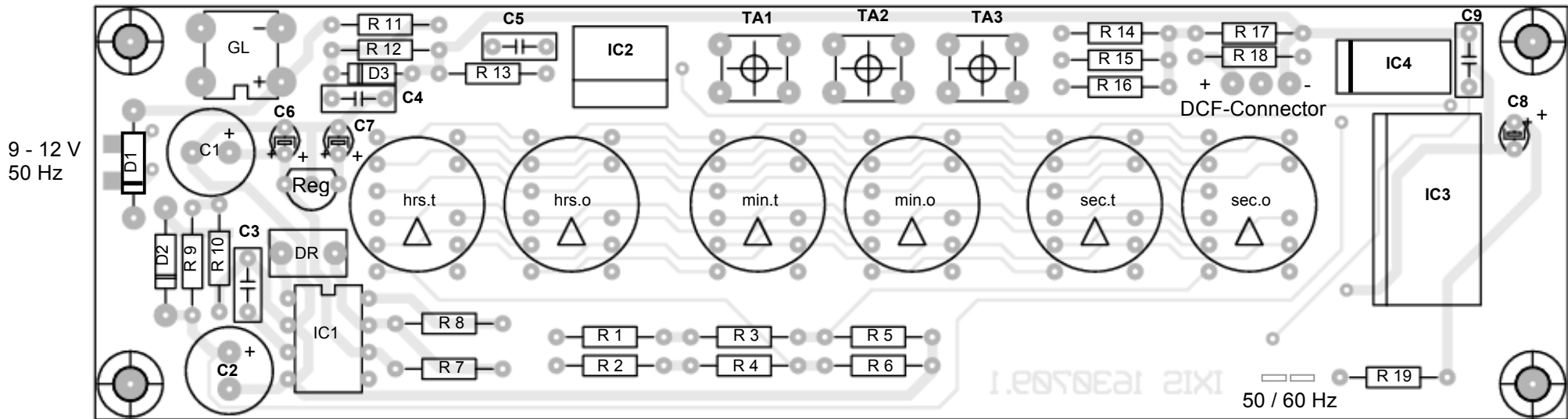


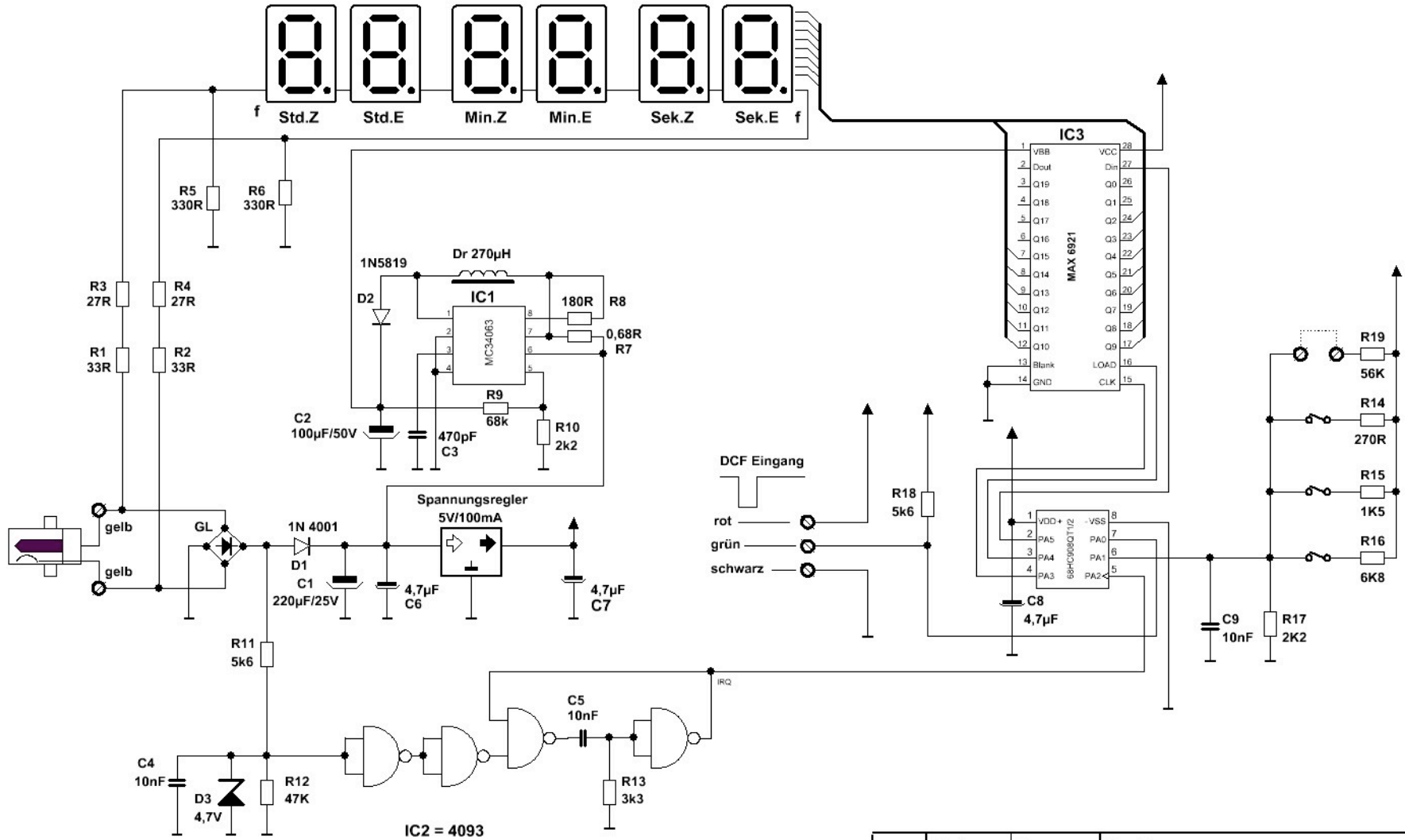
## Bill of material, schematics for VFD clock and DCF77 module



|          |               |             |                     |
|----------|---------------|-------------|---------------------|
| R1; R2   | Resistor      | 27R         | red-pink-black      |
| R3; R4   | Resistor      | 33R         | orange-orange-black |
| R5; R6   | Resistor      | 330R        | orange-orange-brown |
| R7       | Resistor      | 1R          | blue-grey-silver    |
| R8       | Resistor      | 180R        | brown-grey-brown    |
| R9       | Resistor      | 68K         | blue-grey-orange    |
| R10; R17 | Resistor      | 2K2         | red-red-red         |
| R11; R18 | Resistor      | 5K6         | green-blue-red      |
| R12      | Resistor      | 47K         | gelb-pink-orange    |
| R13      | Resistor      | 3K3         | orange-orange-red   |
| R14      | Resistor      | 270R        | red-pink-brown      |
| R15      | Resistor      | 1K5         | brown-green-red     |
| R16      | Resistor      | 6K8         | blue-grey-red       |
| R19      | Resistor      | 56K         | green-blue-orange   |
| C1       | El. capacitor | 220 $\mu$ F | 25V                 |
| C2       | El. capacitor | 100 $\mu$ F | 50V                 |
| C3       | Capacitor     | 470pF       | ceramic             |

|           |              |             |          |
|-----------|--------------|-------------|----------|
| C4;C5;C9  | Capacitor    | 10nF        | ceramic  |
| C6;C7;C8  | Capacitor    | 4,7 $\mu$ F | tantal   |
| DR        | inductor     | 270 $\mu$ H | Neosid   |
| Reg       | regulator    | 5V / 100mA  | TO92     |
| GL        | rectifier    | B100C1A     | bridge   |
| D1        | diode        | 1N 4001/2   |          |
| D2        | diode        | 1N 5819     | Schottky |
| D3        | Z.-diode     | 4,7V        |          |
| IC1       | regulator    | MC34063     |          |
| IC2       |              | CD4093BCM   | mounted  |
| IC3       |              | MAX6921AWI  | mounted  |
| IC4       |              | MC908Q1CE   | mounted  |
| TA1; 2; 3 | press-button | 3301B       |          |
| tubes     | VFD-Display  | IV-6        | 6 tubes  |
| Pcb       | IXIS         | 1630709.1   |          |
|           |              |             |          |
|           |              |             |          |

6 x IV-6



|                | Datum | Name | Bezeichnung                 | Blattzahl: |
|----------------|-------|------|-----------------------------|------------|
| gez.:          |       |      | <b>VFD-Uhr Claus Urbach</b> |            |
| gepr.:         |       |      |                             | Blatt-Nr.: |
| <b>Fa.IXIS</b> |       |      | Zeichnungs-Nr.:             |            |